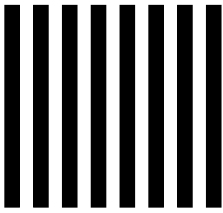


NO POSTAGE  
NECESSARY  
IF MAILED  
IN THE  
UNITED STATES



**BUSINESS REPLY MAIL**  
FIRST-CLASS MAIL PERMIT NO. 5157 SACRAMENTO CA

POSTAGE WILL BE PAID BY ADDRESSEE

SACRAMENTO COUNTY  
3700 BRANCH CENTER RD  
SACRAMENTO CA 95827-9979



### Maintaining your pool

You can help the environment by properly disposing of the water in a swimming pool, fountain and spa. Pool water contains chlorine, copper and filter backwash that can harm aquatic life. For more information about proper pool water disposal, download the pool water brochure at [www.sacramentostormwater.org](http://www.sacramentostormwater.org) (click on the "brochures" link).



### Caring for your car

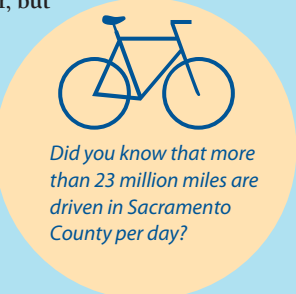
Washing your car in the driveway and allowing it to leak fluid sends harmful chemicals into the storm drain – which is the same as dumping the chemicals directly into a creek or river!



*Did you know that a single quart of motor oil dumped down a storm drain can create a two-acre oil slick?*

### Here's what you can do:

- Regularly check your vehicles for leaks and repair them.
- Take motor oil, antifreeze and other fluids to an automotive center or gas station with a recycling program or participate in a curb-side motor oil pick-up program.
- Wash your vehicle on the lawn or take it to a car wash that recycles its wastewater. **Remember: Biodegradable detergents and other products do not necessarily mean they are "safe for the environment."** These products often degrade faster, but are still toxic to aquatic life.
- Use kitty litter to clean up automotive leaks and spills.
- Reduce your automobile use by carpooling, taking public transit, riding your bike or walking.



*Did you know that more than 23 million miles are driven in Sacramento County per day?*

### Picking up after your pets

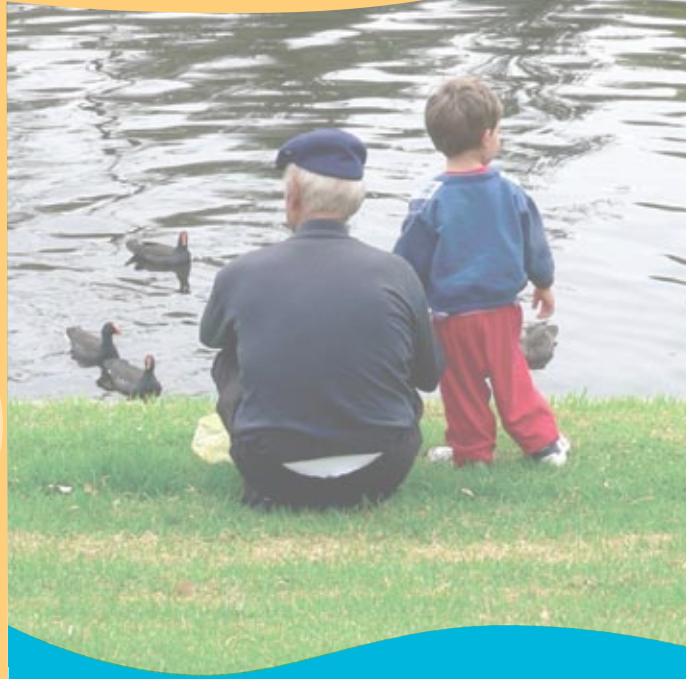
Pet waste contains harmful bacteria that can impact the environment and human health. When it rains, pet waste left on lawns, trails and sidewalks washes into the storm drain system untreated, flowing directly into our local creeks and rivers.



### Here's what you can do:

- Dispose of sealed pet waste in the trash, not in green waste or recycling containers.
- Flush pet waste down the toilet.
- Never dump pet waste into a storm drain.
- Carry a plastic bag when walking your dog.

*Did you know that in Monterey, scientists found that sea otters were declining because they were infected with parasites traced to cat waste?*



# Preserving Creeks Today for Tomorrow

## A guide to caring for waterways

### More on stormwater pollution prevention

If you would like more information about stormwater pollution prevention, log on to [www.sacramentostormwater.org](http://www.sacramentostormwater.org), or call your local stormwater agency at (916) 808-4H2O.



# Help keep our waterways clean and healthy for generations to come

Sacramento County's many waterways enable us to enjoy boating, swimming and fishing activities, and allow us to appreciate the beauty of the outdoors. They provide great recreational resources for families, and serve as important habitats for wildlife.

But our waterways are also fragile; everyday activities such as driving, gardening, making home improvements and washing cars can negatively impact our local creeks and streams. Therefore, adopting simple alternatives in our daily lives can help keep our rivers and streams clean and healthy.

## Sewers and storm drains are two separate systems

Do you know the difference between the sewer system in your home and the storm drain system located on your street? If the answer is no, you're not alone.

- Water that goes down sinks and toilets flows to a **wastewater treatment plant**, where it is **treated to remove pollutants before entering the river**.
- **Water that flows** onto streets and into gutters goes into storm drain pipes that **flow directly to local creeks**. This water flow is called *urban runoff*. On the way to the creeks, urban runoff **picks up pollutants** left by cars, people and pets, and eventually **ends up – untreated – in our creeks and rivers**.

## Why stormwater pollution is a problem...

We don't always see the major effects of stormwater pollution because it's often invisible and a **cumulative problem**. Every pollutant, no matter how small, combines with others to harm aquatic life and affect overall water quality.

Many everyday activities contribute to stormwater pollution. However, there are many ways that **you** can help lessen impacts to the environment.

## In your lawn and garden

Improperly applied fertilizers and pesticides can wash off lawns and gardens and pollute creeks and rivers. Over-use of these products can be harmful to your lawn as well.

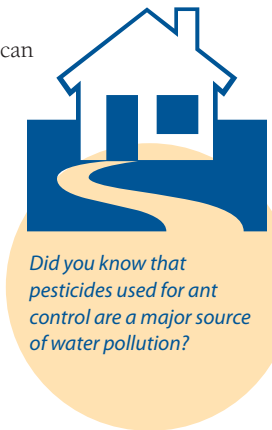
## And remember ...

*If you cannot use your leftover pesticides, fertilizers and paints, either give them to a friend who can use them or take them to your local household hazardous waste collection facility. For more information call:*

• City of Sacramento residents: (916) 379-0500 • City of Galt: (209) 366-7260  
City of Folsom: (916) 355-8397 • All other Sacramento County residents: (916) 875-5555

## Here's what you can do:

- Plant pest-resistant and well-adapted plant varieties such as native plants.
- Know your pest problem – you can control pests with non-toxic alternatives.
- Cover dirt and mulch piles used during projects to prevent pollutants from blowing into the gutters and storm drains.
- Sweep debris from sidewalks and patios.
- Use pesticides and fertilizers sparingly; don't apply two days prior to a forecasted rainfall, and always follow label directions before using these products.
- Dispose of green waste properly. Check with your jurisdiction on proper green waste disposal methods.
- Adopt our *River-Friendly Landscaping* guidelines. Visit [www.sacramentostormwater.org/Riverfriendly](http://www.sacramentostormwater.org/Riverfriendly) for more information.



## Around your house

Home improvement and repairs can generate leftover chemicals and products. If these are disposed of improperly, they can harm the environment.

## Here's what you can do:

- Rinse latex paintbrushes in the sink – not in the gutter. If using oil-based paint, avoid using paint thinner for cleaning and use disposable brushes instead of re-usable brushes that have to be rinsed off.
- Clean up outdoor spills with a broom, not a hose. Use absorbents – cat litter, sawdust or cornmeal – as needed.
- Buy “non-toxic” cleaning products whenever possible.
- Ensure that companies you hire, such as carpet cleaning, painting and hauling services, dispose of materials properly.

## Contact us for more information on stormwater pollution prevention

Name \_\_\_\_\_

Organization (if applicable) \_\_\_\_\_

Address \_\_\_\_\_

City/State/Zip \_\_\_\_\_

Phone \_\_\_\_\_

E-mail \_\_\_\_\_

## Request a brochure or fact sheet

For more information on specific stormwater pollution prevention topics, please indicate which brochure or fact sheet you'd like mailed to you.

- Home improvement (paint and concrete)
- Lawn or garden pest problems
- Pesticides and herbicides
- Storm drain stenciling
- Pool water
- River-Friendly Landscaping*

## Schedule a presentation today!

Would you like someone to come to your organization to talk about stormwater pollution prevention? Please check the following and someone will be in contact with you.

Yes  No

# No Dumping!

